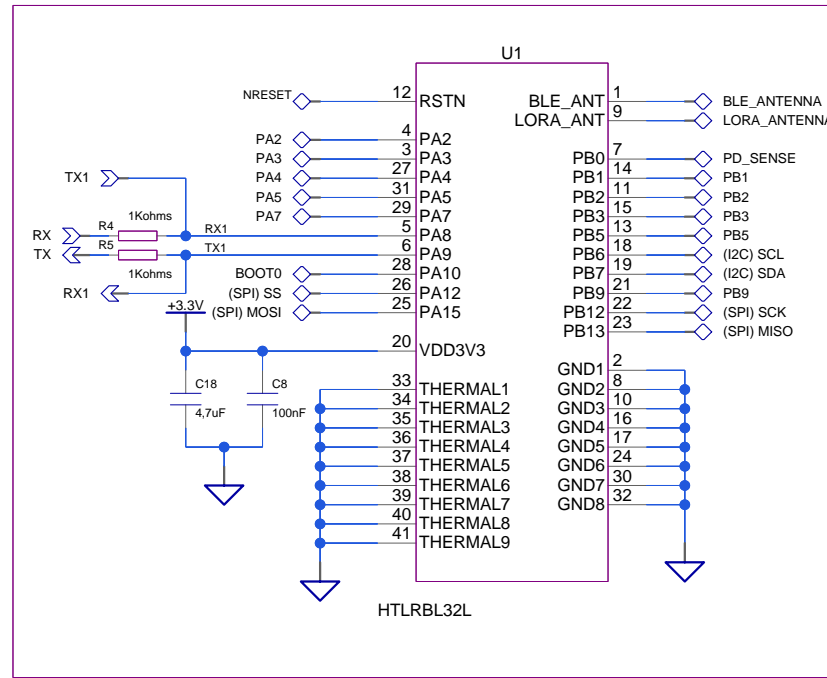
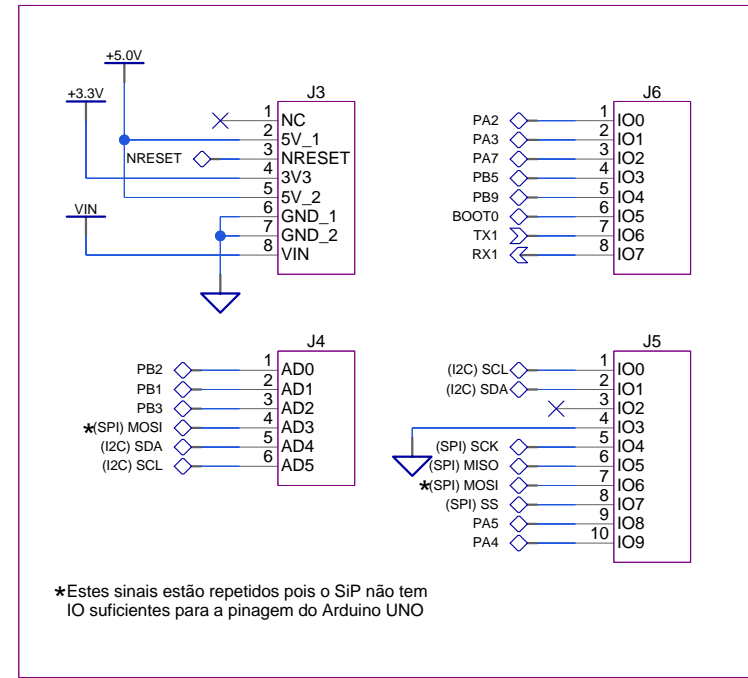


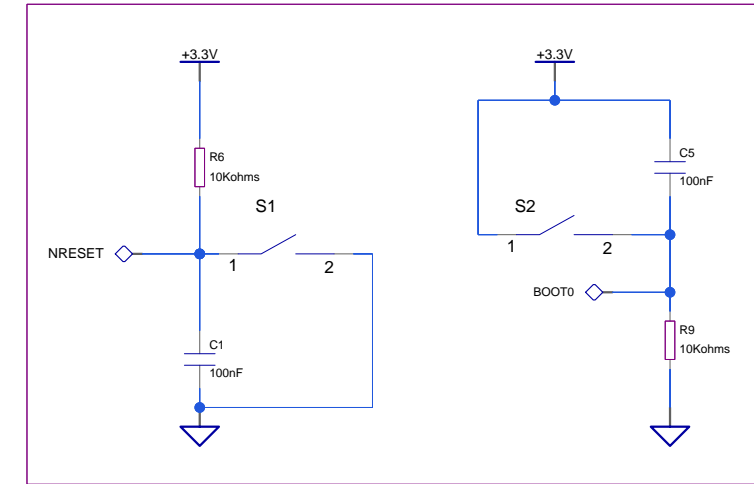
## iMCP HTLRBL32L



## Headers

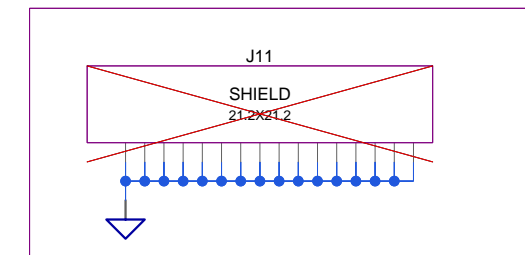


## Buttons

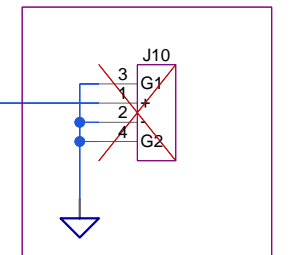


## RF Shield

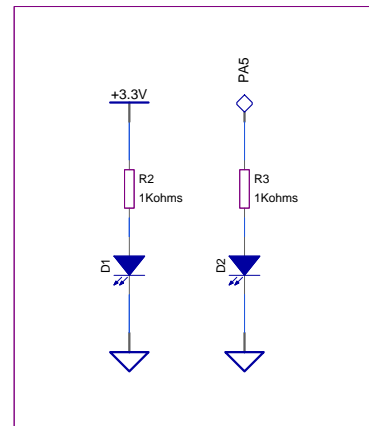
Previsão para montagem de "shield" caso necessário



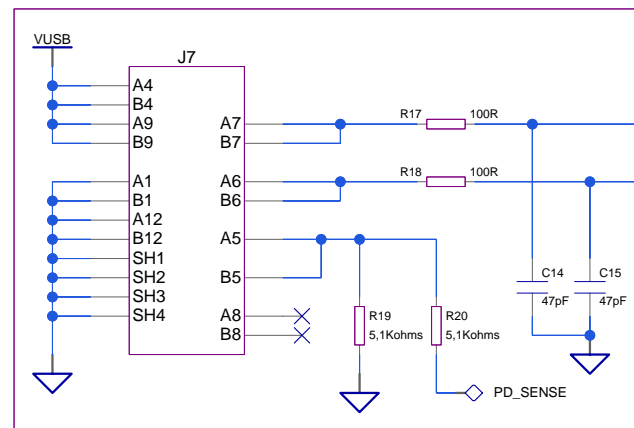
## Battery Connector



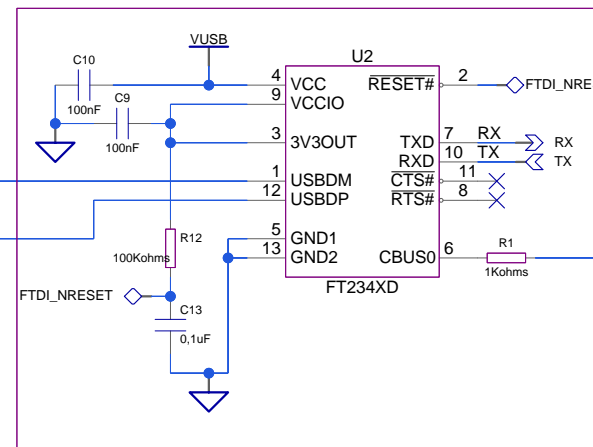
## LEDs



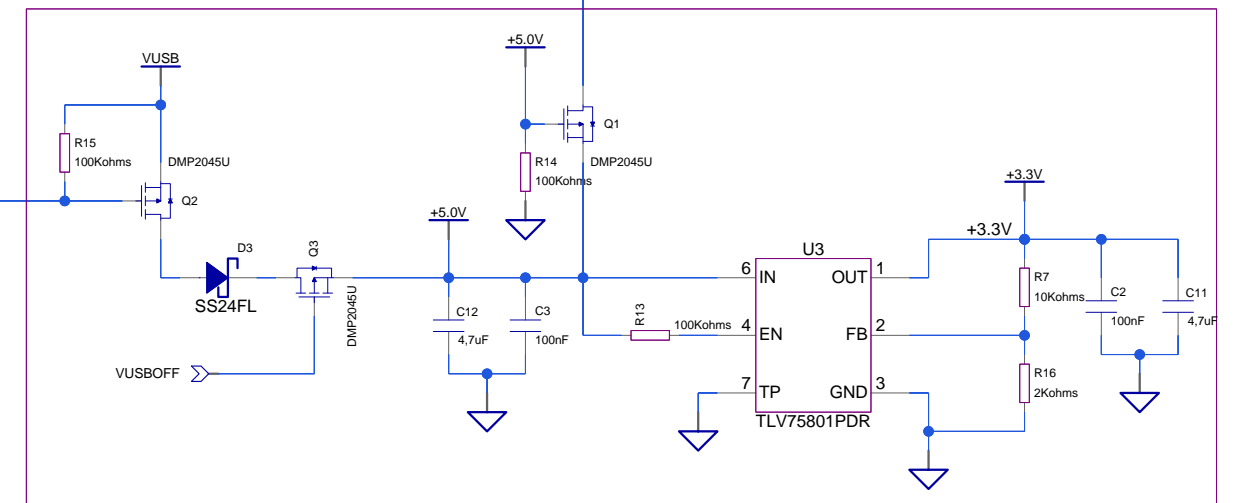
## USB C Connector



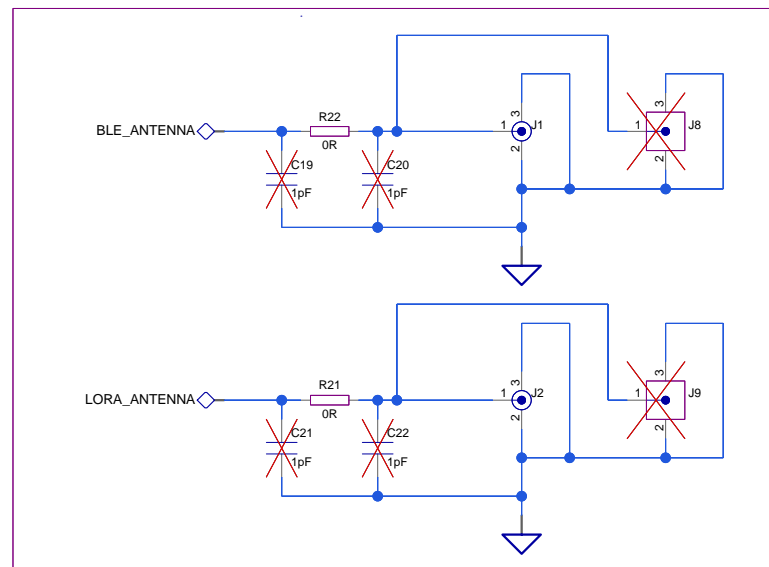
## USB to Serial Converter



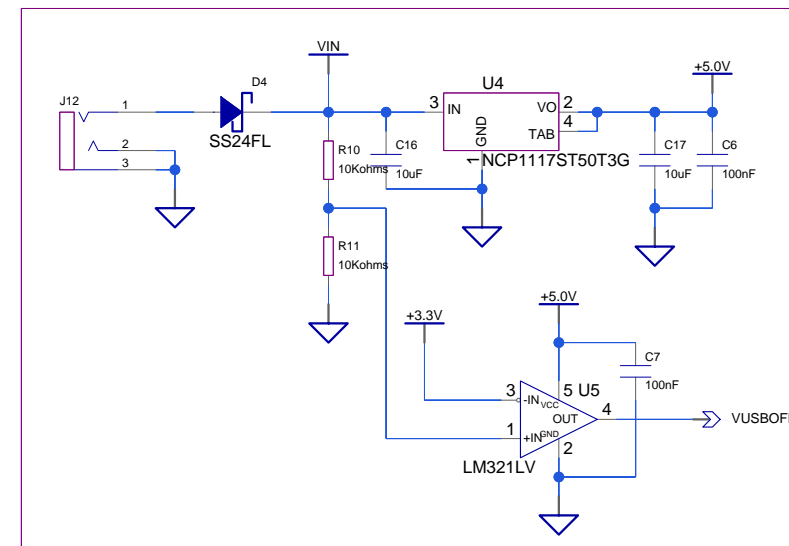
## Voltage Regulator




## Antennas



## VIN Input





# Instituto CERTI Amazônia

## iMCP HTLRBL32L-10 Evaluation Board

SIZE <b>A3</b>	DWG NO <b>920023 - EVB LORA</b>	Schematic1	REV <b>A</b>
DRAWN BY <b>FYM</b>		SHEET <b>1</b> of <b>1</b>	03/04/2023:09:46